

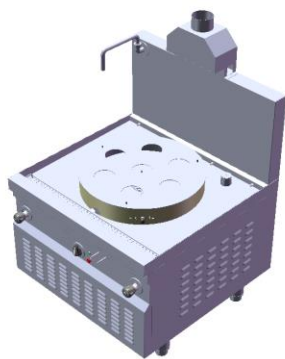


Total Food-Service Solutions

Modular Cooking – Oriental

Gas Steamer

NGSB 9-90 CE



*Due to routine technical improvement, the photograph shown may not represent the latest design of the products.

AVAILABLE MODEL

1. NGSB 9-90 CE

DESCRIPTION

Gas Steamer with 42 kW power rate. Premix Engine Powered Dim Sum Steamer with 7 Dim Sum Trays Steaming Capacity. Quick Steam system thanks to the powerful premix engine. External Handle Design for sturdy component life time even during heavy operation use. Three Steaming Operation: Temperature Mode, Half-Power, or Full Power to achieve balance between performance and energy saving when needed.

ITEM# : _____

MODEL# : _____

NAME : _____

SN : _____

MAIN FEATURE

- Suitable for steaming.
- One blower.
- Design for mass production of dim sum and steamed food.

CONSTRUCTION

- All exterior panels in 304 type of Stainless Steel.
- Top Panel and Splash back is constructed of 1.2 mm Stainless Steel.
- Frame is constructed of 2.0 mm Aluminized.
- Body is constructed of 0.8 mm Stainless Steel.
- Adjustable ± 25 mm leg.

INCLUDED ACCESSORIES

- 7 Hole dim sum plate

OPTIONAL ACCESSORIES

- Full set steamer tray

APPROVAL : _____

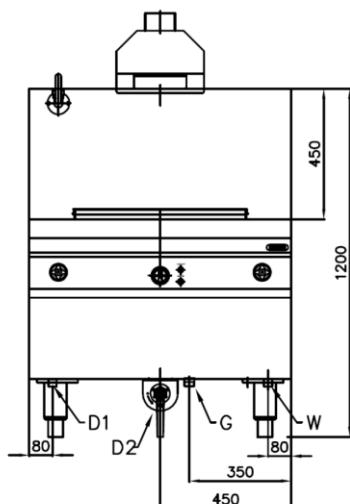


PT. NAYATI INDONESIA
www.nayati.com
nayati@nayati.com

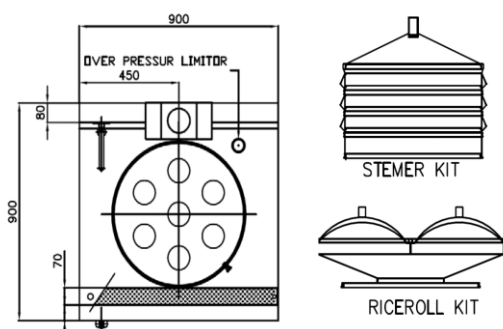
The company reserves the right to make modifications to the products without prior notice.
All information correct at time of printing.
2018.01.04



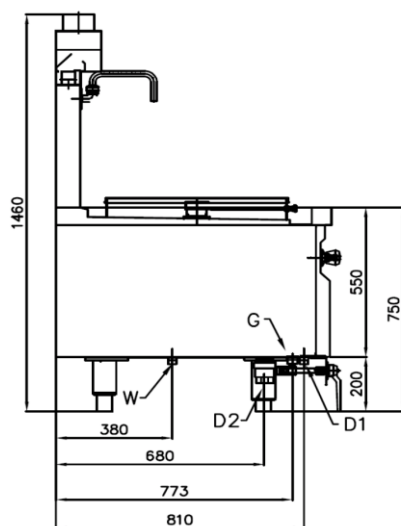
FRONT



TOP



SIDE



* Overall Dimension in mm

ELECTRIC

Electrical rating (Kw)	:	0.08
Element rating (kW)	:	0.08
Electrical supply voltage	:	230V 1N
Required electrical supply (amps):	:	0.34
Electrical current split (amps)	:	L1:0.34

GAS

Gas Consumption	:	42 Kw (36,120kCal/h)
Gas Type Option	:	G20,G25,G30/G31
Gas Connection	:	1"
Water Connection	:	3/4"
Drain 1 & Drain 2	:	3/4" & 1 1/2"
Natural Gas Pressure	:	G20: 20 mbar
LPG Gas Pressure	:	G30: 28 mbar

KEY INFORMATION

Unit dimension (WxDxH)	:	900x900x750/1200 mm
Cooking surface	:	Ø 600 mm
Latent heat emission	:	0.016 kW
Steam emission	:	0.023 kg/h
Net weight	:	149 kg

PACKING DETAILS

Shipping width	:	960 mm
Shipping depth	:	1000 mm
Shipping height	:	1390 mm
Shipping volume	:	1.334 m ³
Gross weight	:	189 kg

APPROVAL

: