

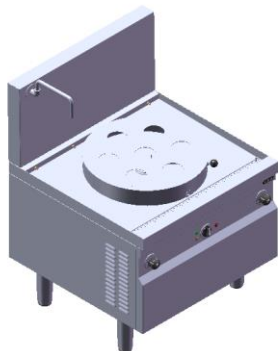


Total Food-Service Solutions

Modular Cooking –Oriental

Electric Steamer

NESB 9-90



*Due to routine technical improvement, the photograph shown may not represent the latest design of the products.

AVAILABLE MODEL

1. NESB 9-90

DESCRIPTION

Electric Steamer with 3 Heaters is an excellent cooking appliance made of stainless steel with 27 kW power rate. It is completed with electronic 3 power levels. Top and splash back are mounted by 1.2 mm of Stainless Steel and Side Panel is constructed of 1.0 mm of Stainless Steel.

ITEM# : _____

MODEL# : _____

NAME : _____

SN : _____

MAIN FEATURE

- Insulated water exchanger for efficiency
- Water level detection and overheat heater protection

CONSTRUCTION

- All exterior panels in 304 type of Stainless Steel.
- Top Panel and Splash back is constructed of 1.2 mm Stainless Steel.
- Frame is constructed of 2.0 mm Aluminized.
- Body is constructed of 0.8 mm Stainless Steel.
- Adjustable ± 25 mm leg.

INCLUDED ACCESSORIES

- 7 Hole dim sum plate

OPTIONAL ACCESSORIES

- Full set steamer tray

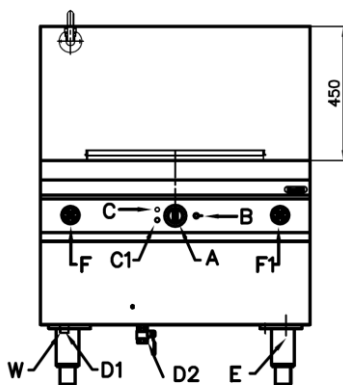
APPROVAL : _____

PT. NAYATI INDONESIA
www.nayati.com
nayati@nayati.com

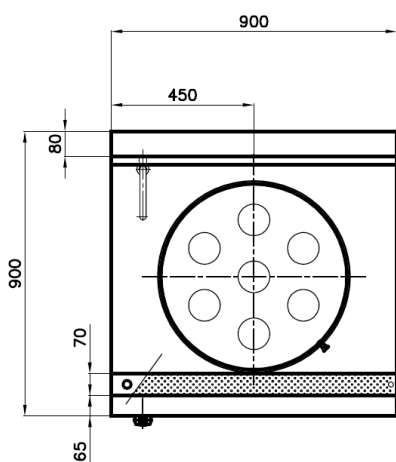
The company reserves the right to make modifications to the products without prior notice.
All information correct at time of printing.
2018.06.26



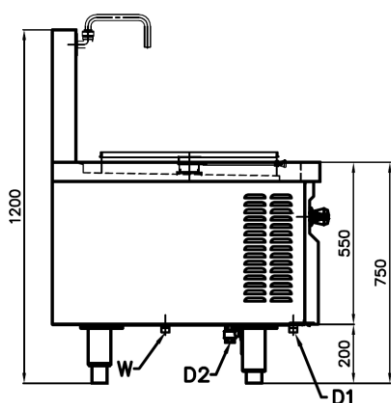
FRONT



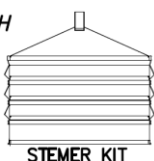
TOP



SIDE



- (A) SELECTOR SWITCH
- (B) WATER EMPTY
- (C) POWER LAMP
- (C1) COOKING LAMP
- (F) STOP TAP F/FAUCHET
- (F1) STOPTAP F/SPRYER



* Overall Dimension in mm

ELECTRIC

Electrical rating (kW)	:	27
Element rating (kW)	:	27
Electrical supply voltage	:	400V 3N
Required electrical supply (amps):	:	41
Electrical current split (amps)	:	-

KEY INFORMATION

Cooking surface	:	Ø 600 mm
Direct heat emission	:	3.20 kW
Latent heat emission	:	2.40 kW
Steam emission	:	3.52 kg/h
Water connection	:	½"
Drain valve	:	D1: ¾" D2: ¾"
Water pressure	:	2-4 bar
Shipping height	:	-
Shipping width	:	-
Shipping depth	:	-
Shipping volume	:	-

APPROVAL : _____